



GNL1 Polyclonal Antibody

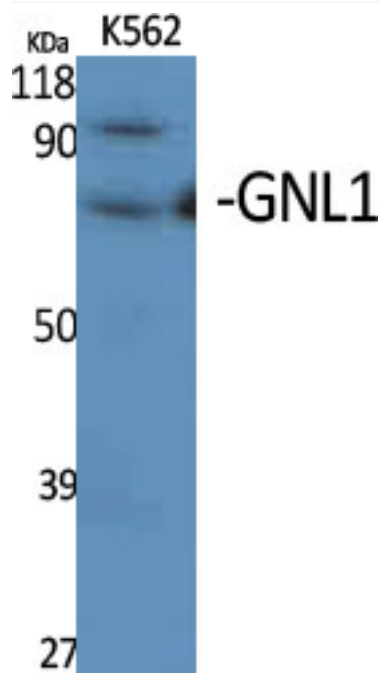
Catalog No	YP-Ab-00413
Isotype	IgG
Reactivity	Human;Mouse;Rat
Applications	WB;ELISA
Gene Name	GNL1
Protein Name	Guanine nucleotide-binding protein-like 1
Immunogen	The antiserum was produced against synthesized peptide derived from human GNL1. AA range:61-110
Specificity	GNL1 Polyclonal Antibody detects endogenous levels of GNL1 protein.
Formulation	Liquid in PBS containing 50% glycerol, 0.5% BSA and 0.02% sodium azide.
Source	Polyclonal, Rabbit,IgG
Purification	The antibody was affinity-purified from rabbit antiserum by affinity-chromatography using epitope-specific immunogen.
Dilution	Western Blot: 1/500 - 1/2000. ELISA: 1/20000. Not yet tested in other applications.
Concentration	1 mg/ml
Purity	≥90%
Storage Stability	-20°C/1 year
Synonyms	GNL1; HSR1; Guanine nucleotide-binding protein-like 1; GTP-binding protein HSR1
Observed Band	69kD
Cell Pathway	extracellular space,nucleus,
Tissue Specificity	Cervix,Muscle,Peripheral blood leukocyte,Skin,T-cell,
Function	domain:In contrast to other GTP-binding proteins, this family is characterized by a circular permutation of the GTPase motifs described by a G4-G1-G3 pattern.,function:Possible regulatory or functional link with the histocompatibility cluster.,PTM:Phosphorylated upon DNA damage, probably by ATM or ATR.,similarity:Belongs to the MMR1/HSR1 GTP-binding protein family.,
Background	The GNL1 gene, identified in the human major histocompatibility complex class I region, shows a high degree of similarity with its mouse counterpart. The GNL1 gene is located less than 2 kb centromeric to HLA-E, in the same transcriptional orientation. GNL1 is telomeric to HLA-B and HLA-C. [provided by RefSeq, Jul 2008],
matters needing attention	Avoid repeated freezing and thawing!



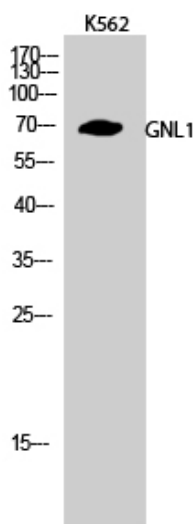
Usage suggestions

This product can be used in immunological reaction related experiments. For more information, please consult technical personnel.

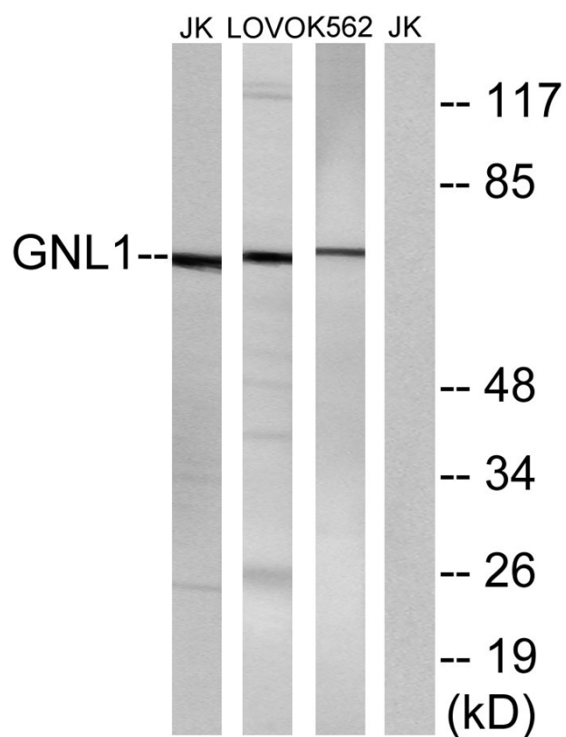
Products Images



Western Blot analysis of various cells using GNL1 Polyclonal Antibody



Western Blot analysis of K562 cells using GNL1 Polyclonal Antibody



Western blot analysis of lysates from Jurkat, LOVO, and K562 cells, using GNL1 Antibody. The lane on the right is blocked with the synthesized peptide.